



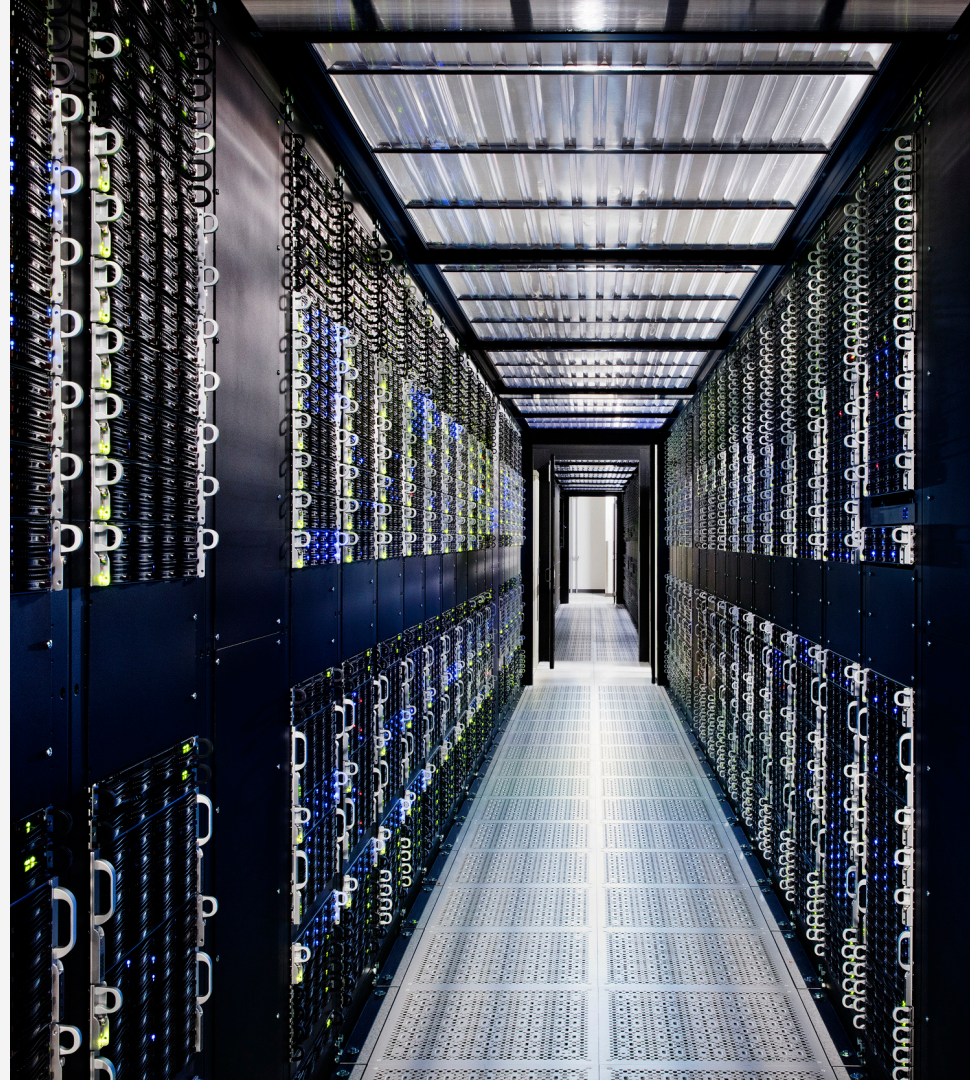
Adopt LinuxONE to meet ISO 20022 compliance deadlines between now and 2025 and for broader payments transformation

Solution Brief

Jan 2022

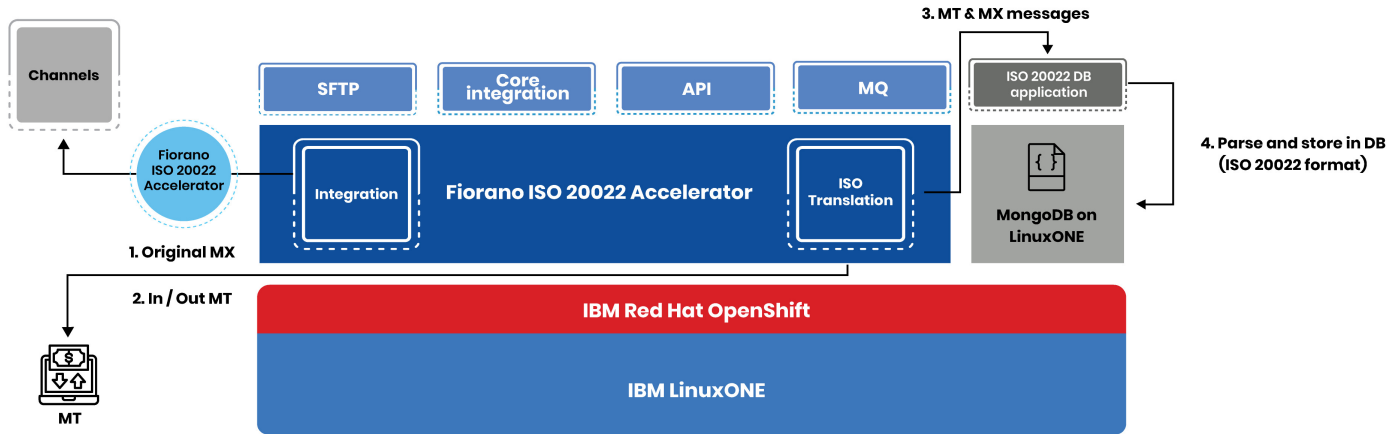
An overview of the combined benefits and features of Fiorano ISO 2022 Accelerator on IBM LinuxONE

- A solution that seamlessly delivers fast compliance with multi-scheme ISO 2022 deadlines with foundations to monetize ISO 2022 for competitive differentiation



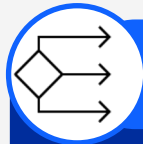
ISO 2022 is canonical and Fiorano middleware delivers a single common solution for multi-scheme ISO 2022 adoption requirements

- The majority of banks and FIs globally will need to comply with multiple ISO 2022 scheme specifications between November 2022 and November 2025.
- Fiorano ISO 2022 Accelerator running on **IBM LinuxONE** efficiently converts existing SWIFT MT messages to the new ISO 2022 standard in a timely and cost-effective way.
- Fiorano ISO2022 Accelerator platform is listed by SWIFT as a validated vendor solution to meet SWIFT CBPR+ requirements out of the box.



Fiorano ISO 2022 Accelerator on IBM LinuxONE allows users to comply with regulatory requirements on time without disrupting existing operations

The solution effectively converts existing SWIFT MT messages to the new ISO 2022 standard in a timely and cost-effective way



Non-disruptive adoption

Fiorano's powerful and **codeless** visual integration studio, adapters, and tools allow easy and pain-free integration of ISO 2022 translation libraries into existing bank / financial institution IT environments with minimal effort, in a non-disruptive manner



Step-up and step-down Truncation management

A commonly accepted risk-area for banks globally when adopting ISO 2022 is data truncation of Fields and Characters

Fiorano ISO 2022 Accelerator addresses data truncation management out-of-the-box, delivering guaranteed lossless translations



Leveraging ISO 2022 data

Optional DB add-ons provide powerful capabilities for financial institutions to extract value from ISO 2022 messages

Additionally, IBM LinuxONE's secure environment with MongoDB supports emerging ISO 2022 use-cases that leverages rich and contextual ISO 2022 data, beyond translation-related compliance



Secure

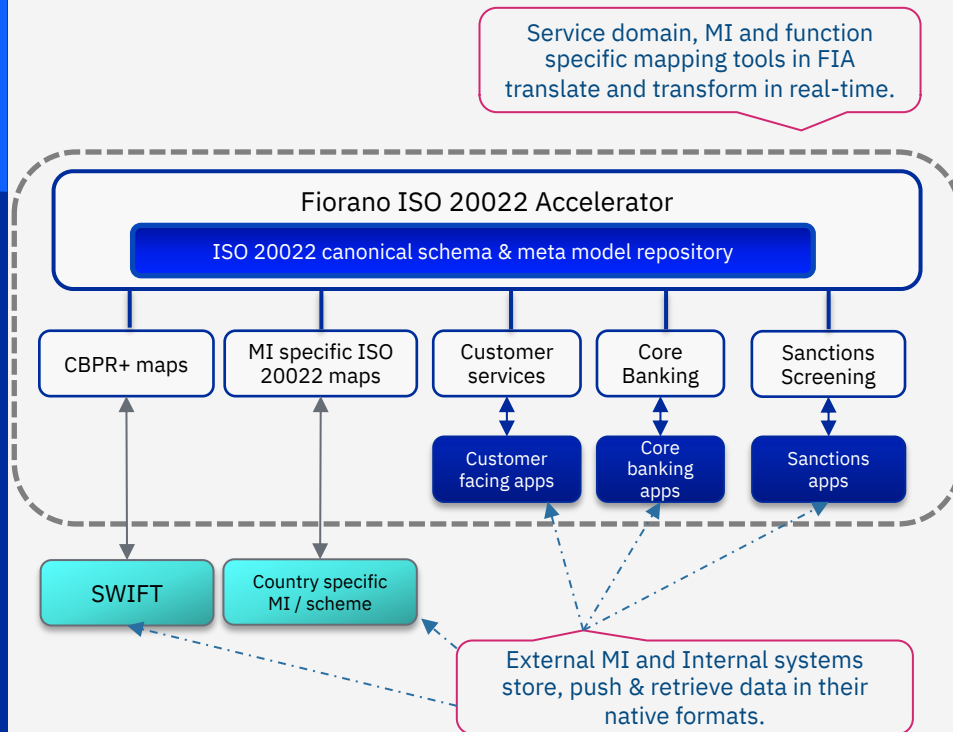
Pervasive encryption: enables you to efficiently deploy and deliver a solution designed to comply with ISO 2022 to help you gain great confidence in your compliance preparedness

Hardware Security: Designed to meet the requirements for FIPS 140-2 Level 4, the highest cryptographic security available commercially¹

Simplified Compliance: Encrypt and decrypt data faster

Key features

- Using middleware offers banks a pragmatic approach to ISO 2022 adoption as it allows easy and fast migration, with minimal risk and costs.

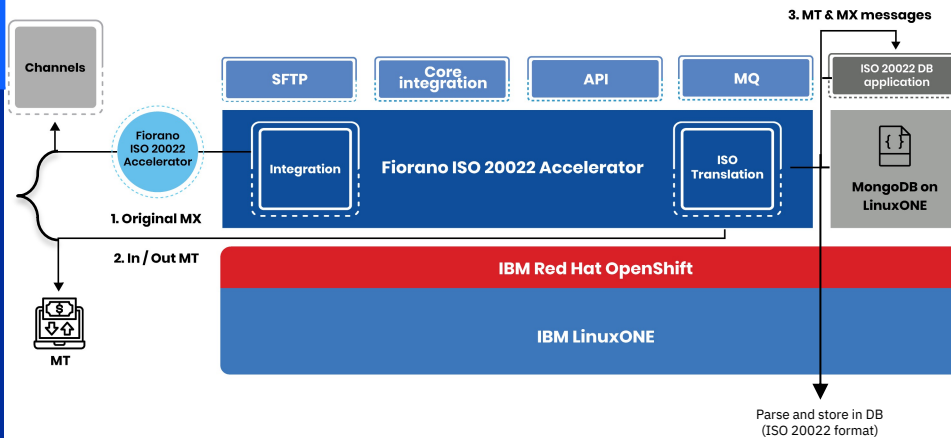


Benefits

- Fiorano ISO 2022 Accelerator is a platform that provides a central and flexible reference data model for ISO 2022 translations, along with supporting integration adapters, services and pre-configured MT <> MX mappings and translations.
- Fiorano ISO 2022 Accelerator delivers accelerated delivery of translations from legacy MT/legacy proprietary formats to new ISO 2022 formats and vice-versa, in real-time.
- ** Compatible with IBM MQ® (adapters included).

Key features

- Easy integration into technology environments that are (a) not API-native, and (b) not designed to be interoperable & integrate with 3rd party systems. With IBM LinuxONE, these tools are deployed on a platform that is secure, cost-effective and agile.

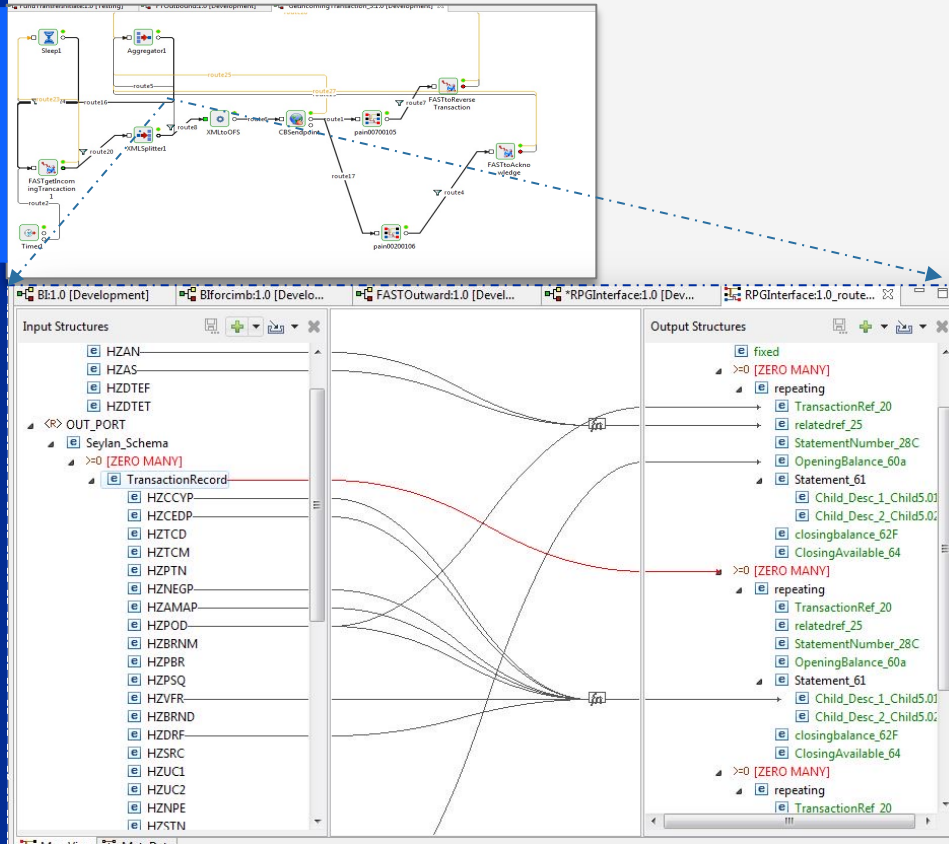


Benefits

- Fiorano ISO 2022 Accelerator minimizes risk by incorporating Fiorano’s mature no-code and visual studio and tools for integration, along with its SWIFT-certified ISO 2022 translation platform and scheme-specific licensed translations.
- Engineers can drag-drop-connect to systems without writing a single line of code, delivering high productivity.
- Fiorano’s integration studio offers:
 - Easy and fast integration with legacy systems and environments
 - Custom integration component development in C / C++ / C# and Java™
 - Event-driven integration architectures

Key features

- Fiorano's SWIFT- validated ISO 2022 middleware supports real-time message de-composition (MX-MT) and re-composition (MT-MX) for CBPR+ and other schemes.

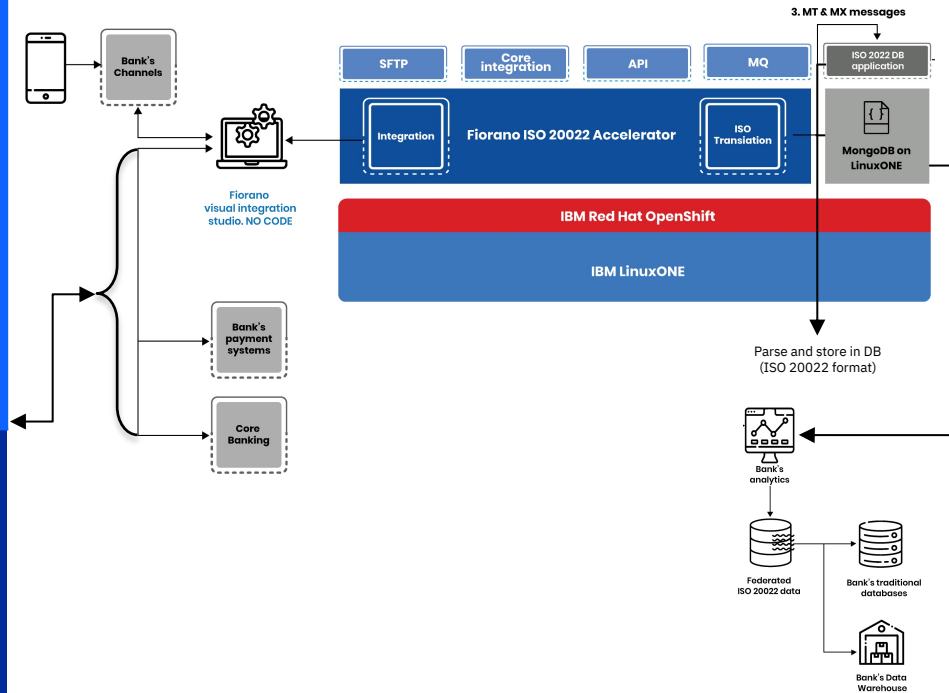


Benefits

- Translation processes in Fiorano are designed and deployed visually in Fiorano integration studio.
- Event-orchestration is managed within Fiorano.
- Non-restrictive: Fiorano mapping tools allow easy extensibility to new / changing ISO 2022 schemes as they evolve.

Key features

- By leveraging native MongoDB data-platform capabilities on IBM LinuxONE, banks and financial institutions can now take full advantage of Fiorano ISO 20022 platform's rich and contextual message structure and data-language through direct access to powerful add-ons and functions of MongoDB on IBM LinuxONE.

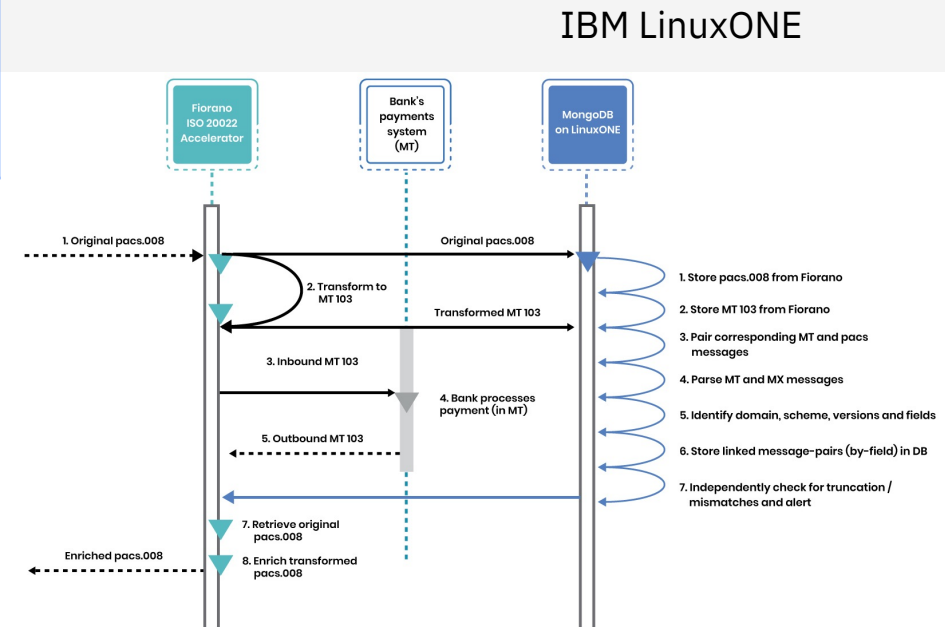


Benefits

- Add-ons in MongoDB on IBM LinuxONE support:
 - Bridged-translation models for data truncation management
 - Parsing, identification of ISO 20022 field-structures and storage of ISO 20022 messages with individual fields earmarked in respective database columns
 - Use-cases beyond translation by making field-level ISO 20022 message data directly accessible via. standard SQL queries
 - Native ISO 20022 analytics
 - Powerful and emerging use-cases for Machine Learning and Artificial Intelligence

Key features

- Mongo DB on IBM LinuxONE enables ISO 20022 payments meta-data accessible for multiple use-cases, through an optional ISO 20022 native data application.



Benefits

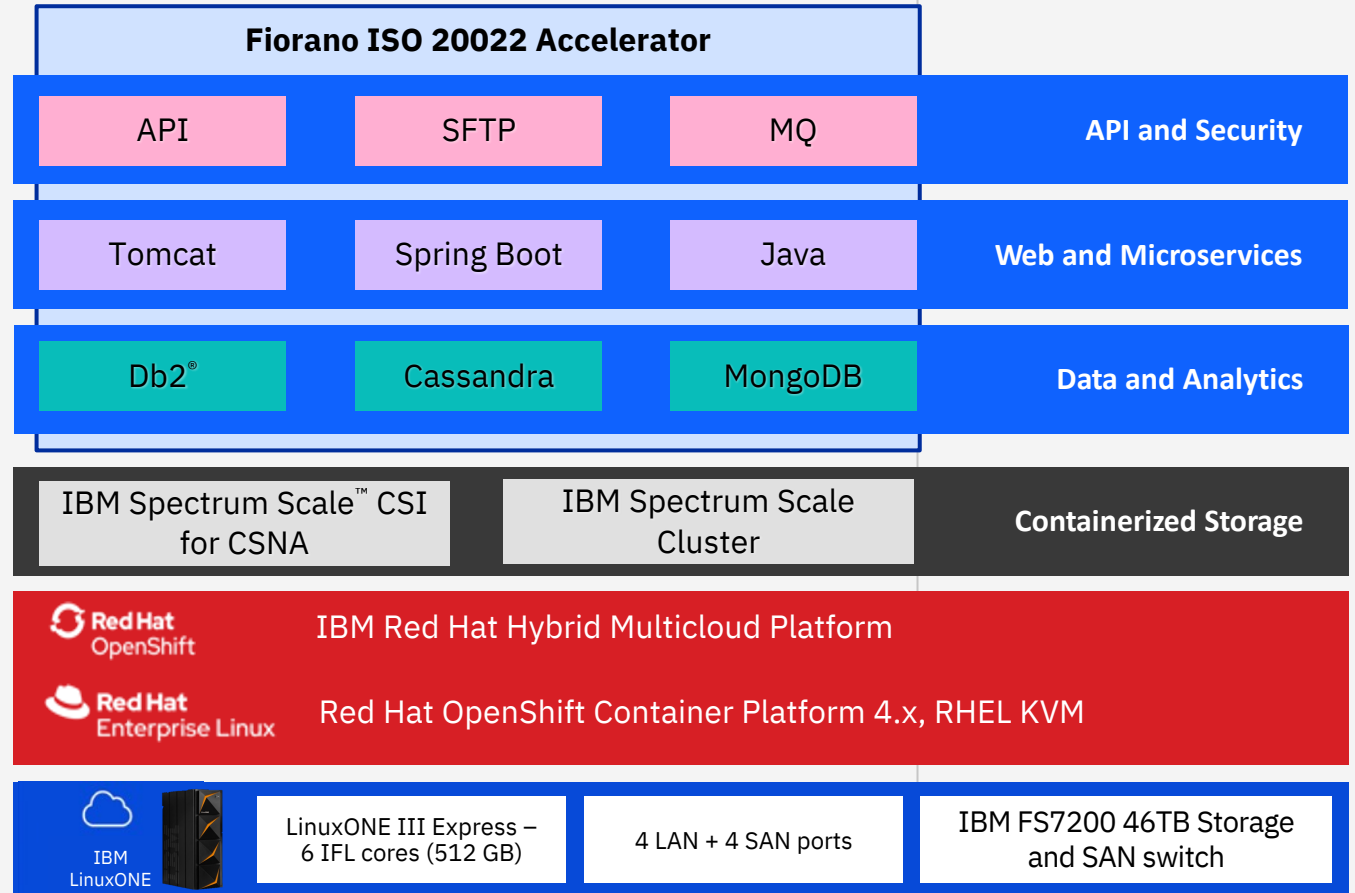
- IBM LinuxONE offers an optionally pre-integrated ISO 20022 data application on MongoDB:
 - MT and MX messages stored as pairs in ISO 20022 format JSON
 - SQL and API interfaces

- IBM LinuxONE's reliable computing performance and enhanced security features, combined with Fiorano ISO 20022 Accelerator's capabilities, enables on-time compliance with regulatory requirements without disrupting existing operations and keeping up to speed with business requirements.
- The combined solution delivers predictable costs, and agility to ISO 20022 adoption projects.

- IBM LinuxONE provides end-to-end pervasive encryption, enabled by much faster hardware encryption both on-chip and in the separate CryptoExpress card, and secured by protected keys. Customers and executives can now be confident about the privacy and security of their data in transit, at rest, or in use.
- The IBM LinuxONE is designed to meet the requirements for FIPS 140-2 Level 4, the highest cryptographic security available commercially¹. In contrast, high security attainment in the industry is typically Level 2. Organizations can protect sensitive data and maintain privacy by policy as data moves from its source throughout your enterprise—and across hybrid multi-clouds. LinuxONE with IBM Hyper Protect Data Controller provides end-to-end, data-centric encryption and privacy to keep your data protected no matter where it travels in your enterprise.
- The IBM Z[®] and LinuxONE servers are certified at EAL 5+, the highest level of common criteria security certification for commercial servers². So, an application that is running on one partition (LPAR) cannot access another application on a different partition, which provides essentially the same security as an air-gapped system.
- Secure Execution another feature that is designed to help enterprises who want to be able to support confidentiality and data integrity for selected workloads and simplify efforts to meet regulatory challenges. It not only securely separates second-level guest operating systems running under KVM for IBM LinuxONE from each other but securely separates access to second-level guests from the hypervisor.



- Fiorano ISO 2022 Accelerator bundled with Red Hat® OpenShift® and IBM LinuxONE is a self-contained gateway that is built on cloud platform on-prem. It is easy and timely to implement and operate. It is designed to be secure, cost-effective, and agile.



Enable users to comply with ISO 20022 deadlines without disrupting their existing operations.

- Book a consultation to explore the advantages of Fiorano ISO 20022 Accelerator on IBM LinuxONE
- Quickstart with Fiorano ISO 20022 Accelerator on IBM LinuxONE Express Bundle
- Demo the solution and evaluate your need



SWIFT case-study

[ISO 20022 in focus with Fiorano. May 2021](#)



LPNHelp@us.ibm.com

To learn more about how IBM Z and IBM LinuxONE platforms combined with Fiorano ISO 20022 Accelerator can benefit your banking institution, please contact LPNHelp@us.ibm.com.

You may also contact your IBM sales representative or IBM Business Partner.

Learn more

About IBM LinuxONE - visit:

ibm.com/linuxone

About IBM Z - visit:

ibm.com/it-infrastructure/z

© Copyright IBM Corporation 2022

IBM Corporation
New Orchard Road, Armonk, NY 10504
Produced in the United States of America January 2022

IBM, the IBM logo, ibm.com, IBM Z, Db2 and Spectrum Scale are trademarks of International Business Machines Corp., registered in many jurisdictions worldwide. Other product and service names might be trademarks of IBM or other companies.

A current list of IBM trademarks is available on the web at "Copyright and trademark information" at www.ibm.com/legal/copytrade.shtml.

The registered trademark Linux® is used pursuant to a sublicense from the Linux Foundation, the exclusive licensee of Linus Torvalds, owner of the mark on a world-wide basis.

Java and all Java-based trademarks and logos are trademarks or registered trademarks of Oracle and/or its affiliates.

The registered trademark Linux® is used pursuant to a sublicense from the Linux Foundation, the exclusive licensee of Linus Torvalds, owner of the mark on a worldwide basis.

Red Hat and OpenShift are trademarks or registered trademarks of Red Hat, Inc. or its subsidiaries in the United States and other countries. All logos or trademarks remain the property of their respective owners.

This document is current as of the initial date of publication and may be changed by IBM at any time. Not all offerings are available in every country in which IBM operates.

The performance data discussed herein is presented as derived under specific operating conditions. Actual results may vary. It is the user's responsibility to evaluate and verify the operation of any other products or programs with IBM products and programs.

THE INFORMATION IN THIS DOCUMENT IS PROVIDED "AS IS" WITHOUT ANY WARRANTY, EXPRESS OR IMPLIED, INCLUDING WITHOUT ANY WARRANTIES OF MERCHANTABILITY, FITNESS FOR A PARTICULAR PURPOSE AND ANY WARRANTY OR CONDITION OF NON-INFRINGEMENT.

IBM products are warranted according to the terms and conditions of the agreements under which they are provided. The client is responsible for ensuring compliance with laws and regulations applicable to it. IBM does not provide legal advice or represent or warrant that its services or products will ensure that the client is in compliance with any law or regulation. Statements regarding IBM's future direction and intent are subject to change or withdrawal without notice, and represent goals and objectives only

1. Source: <https://www.ibm.com/security/cryptocards/highlights>
2. Source: <https://www.commoncriteriaportal.org/files/epfiles/1160c.pdf>